

WinterKids Grant Update

We won second place!

- Thank you to the community for voting and supporting us!
- Grant award: \$2,000
- Will support outdoor recreation programs for youth: ski club scholarships and equipment for summer aquatics programs (kayaks, paddleboards, etc.)

Vote Today!
COMMUNITY VOTING IS NOW OPEN!

Voting is available July 1-July 31 to support Biddeford Recreation in the WinterKids Downhill 24 Outdoor Fund Grant contest!

Every vote matters! Winners will be selected based on total votes!

COMMUNITY VOTE → <https://winterkids.org/downhill-24/outdoor-fund/>

LISA THOMPSON, RECREATION DIRECTOR · LISA.THOMPSON@BIDDEFORDMAINE.ORG · (207)283-0841

3



Community Playground Build: September 30-October 4, 2024

- Playground project upgrades at Clifford Park, Rotary Park, and May Street Park
- Working with UltiPlay on playground amenities
- Updates includes:
 - Addition of natural-themed playground structure adjacent to Tennis Courts at Clifford Park



- Repurposing of play structure by Teen Center to move to grove area at Rotary Park. With the addition of some new elements, this will create a larger central playground area at Rotary Park.
- Addition of basket-swing at May Street Park



Clifford Park • Nature Play

We will be looking for volunteers to assist during the Rotary Park build. Stay tuned for more information about ways to be involved!



LISA THOMPSON, RECREATION DIRECTOR · LISA.THOMPSON@BIDDEFORDMAINE.ORG · (207)283-0841

4


4

Landscape Architecture | Skate / Bike Park Planning & Design | Construction Services

Skate Park Timeline

- Audit conducted in October 2023 with Brad Siedlecki, Principal at Pillar Design Studios (safety report featured here)
- Early Spring 2024, select sections of the skate park were closed
- July 2024, full skate park was closed due to safety concerns

BIDDEFORD SKATEPARK



Pillar Design Studios conducted a site visit to the Biddeford Skatepark on October 19th to engage in discussions with City officials regarding the condition of the current skatepark. During this visit, the City sought our input on the associated costs and our proposed approach for addressing the issues with the existing concrete, wood, and asphalt features.

Following a thorough examination of the site and the identification of areas requiring attention, it became evident that the extent of repairs needed was substantial. Merely applying superficial fixes, often referred to as "putting a Band-Aid" on these problem areas, would prove inadequate and unlikely to justify the expenditure. Numerous sections of the existing asphalt exhibited uneven surfaces and signs of settling or sinking, which would only compound with additional use, further undermining the park's quality.

Based on our professional assessment, we recommend the removal of the existing park, followed by the initiation of a geotechnical investigation to address the subsurface conditions at the park comprehensively. Upon completion of this investigation, we can proceed to develop a new and comprehensive plan for the facility.


Pillar Design Studios expresses gratitude for the City's previous efforts to accommodate skateboarders, bikers, and scooters. We eagerly anticipate the opportunity to contribute to the creation of an updated, well-utilized facility.

LISA THOMPSON, RECREATION DIRECTOR · LISA.THOMPSON@BIDDEFORDMAINE.ORG · (207)283-0841
5

5

Skate Park Closure Announcement

- Shared in July 2024 on various city messaging platforms
- Community feedback was requested during closure announcement about the status and future of the park space




Biddeford Recreation
July 22 at 11:24 AM · 🌐

Due to safety concerns, the skate park located at Rotary Park is closed until further notice. We ask that the public stay off the skate park equipment and surrounding areas and do not go inside the perimeter fencing surrounding the park. The Recreation Department will be conducting an assessment of the skate park and making recommendations to the City Council on the future of this facility.

If you have any questions or concerns regarding the current closure of the skate park, please contact Recreation Director Lisa Thompson at: lisa.thompson@biddefordmaine.org

TEACH A COURSE
6

6



Concerns

- Deteriorating structure
- Cracks and rust
- Uneven surfaces
- Vegetation
- Crumbling cement
- Missing structural elements on half pipe due to removal
- Shifting of the structure

Current Condition of Skate Park

Site walk conducted 8.13.24

LISA THOMPSON, RECREATION DIRECTOR · LISA.THOMPSON@BIDDEFORDMAINE.ORG · (207)283-0841

7

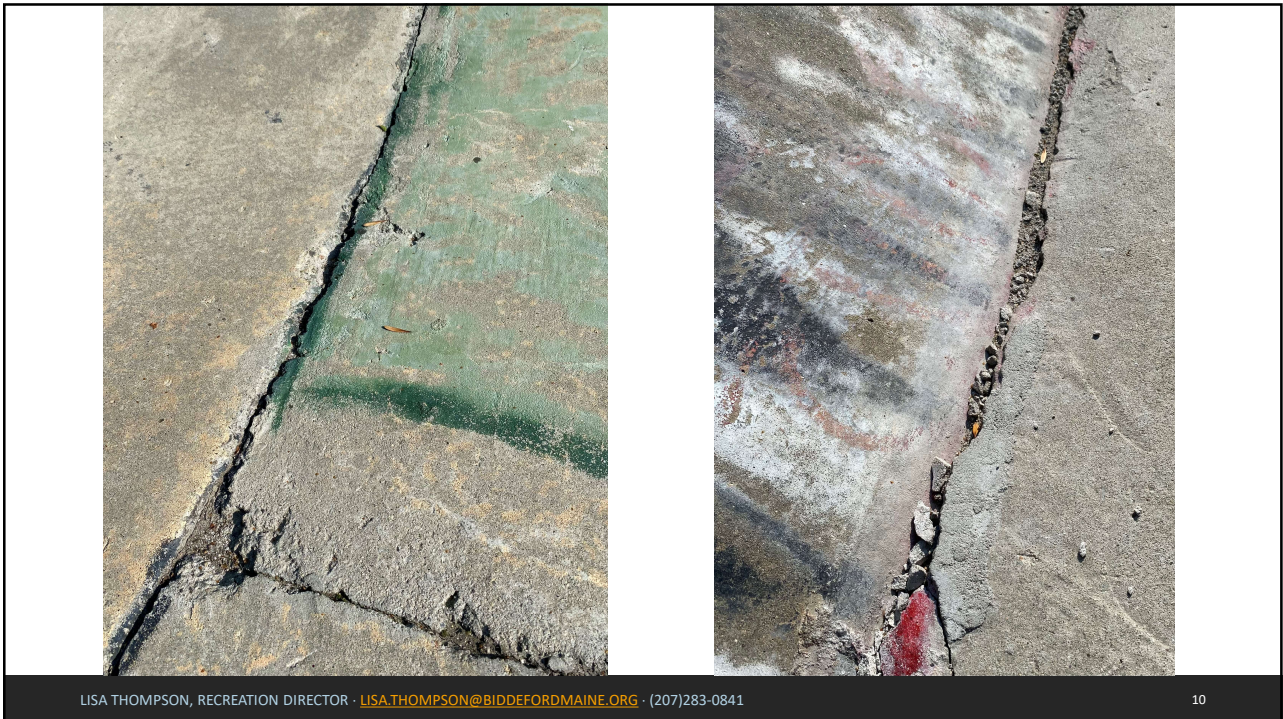
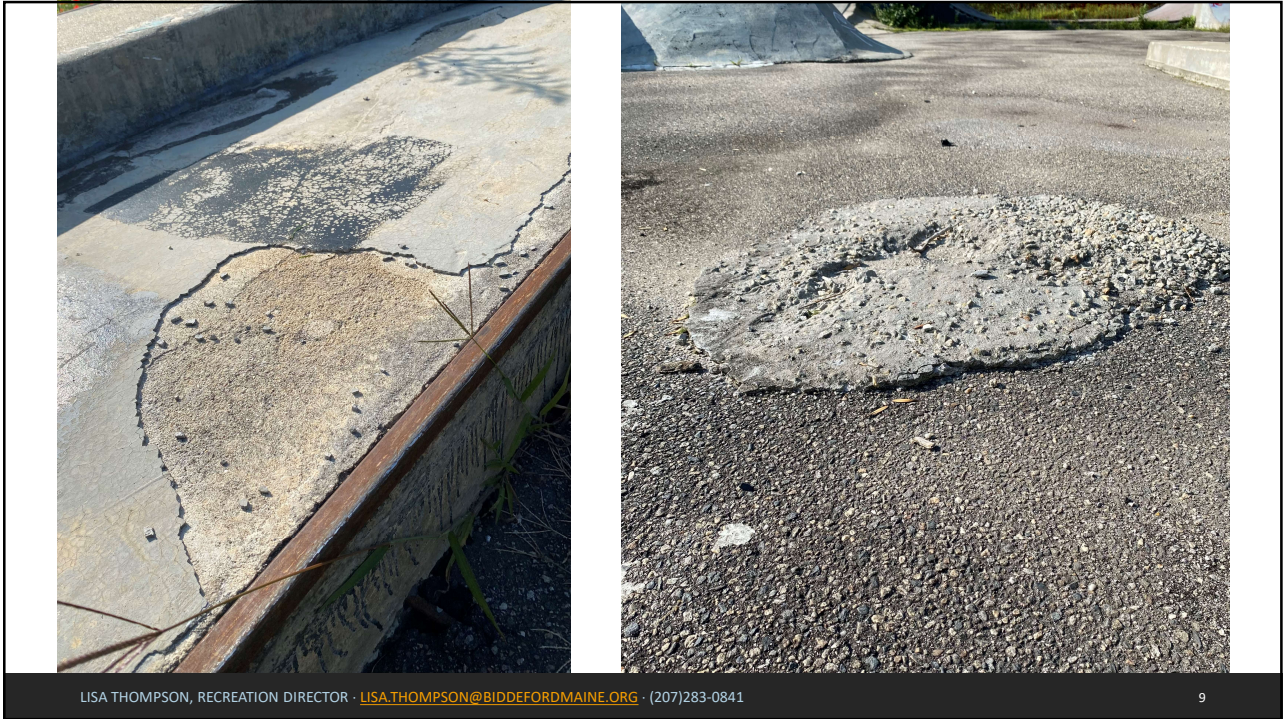
7



LISA THOMPSON, RECREATION DIRECTOR · LISA.THOMPSON@BIDDEFORDMAINE.ORG · (207)283-0841

8

8

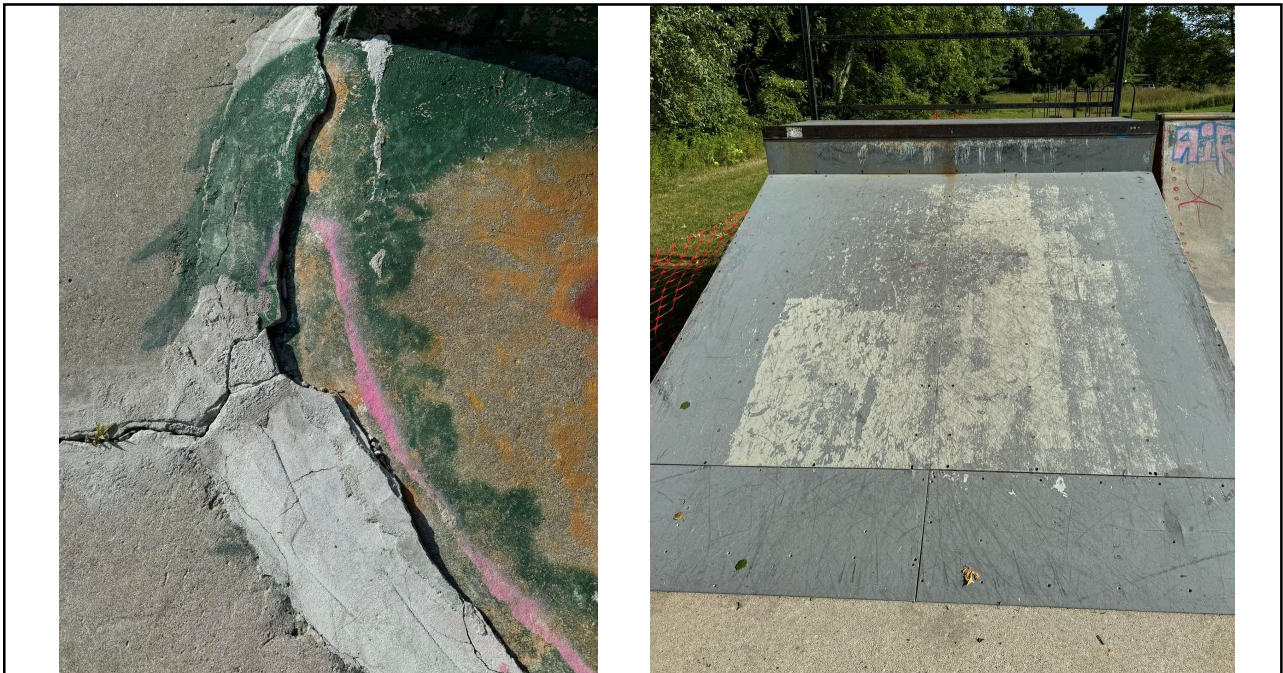




LISA THOMPSON, RECREATION DIRECTOR · LISA.THOMPSON@BIDDEFORDMAINE.ORG · (207)283-0841

11

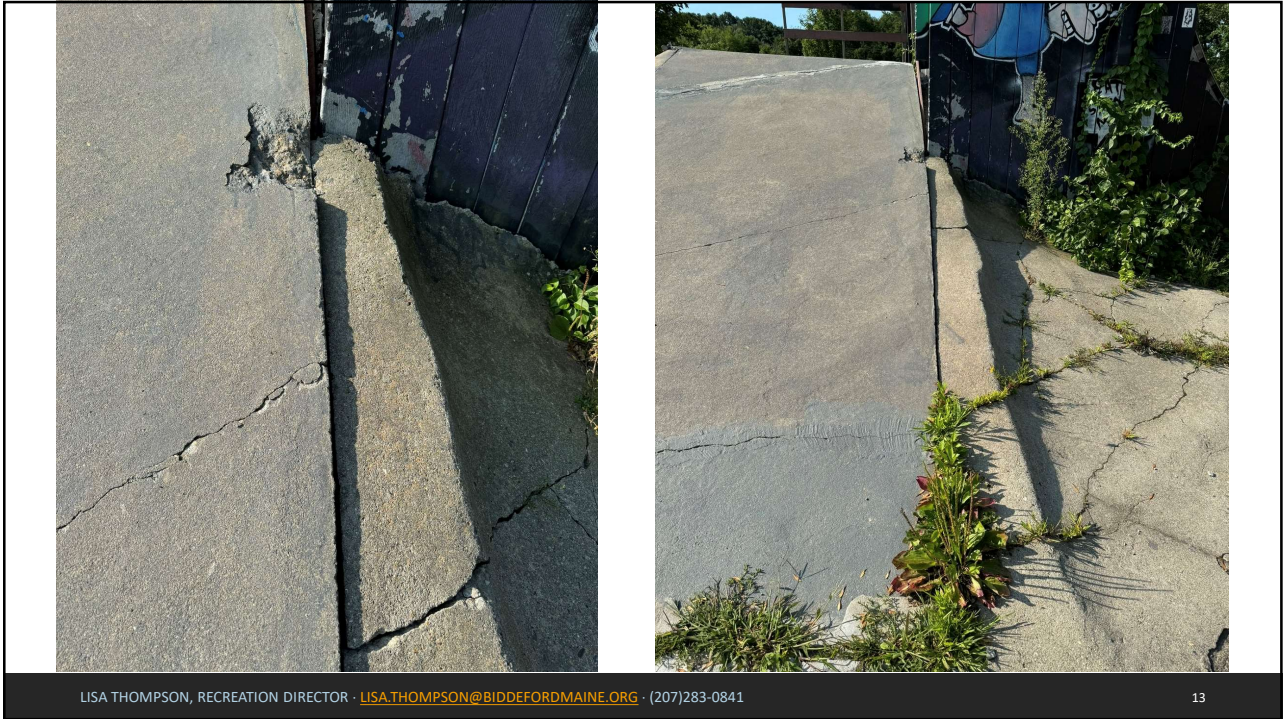
11



LISA THOMPSON, RECREATION DIRECTOR · LISA.THOMPSON@BIDDEFORDMAINE.ORG · (207)283-0841

12

12



13



14



Skate Park Community Discussion Event: August 29, 2024 - Rotary Park Teen Center

Join Lisa Thompson, Recreation Director, Erika Dube, Deputy Recreation Director, and Mayor Martin Grohman for an evening of discussion where we will share updates about the skate park and ask for feedback from the community about the future of this important recreational space in our community!

- Rotary Park Teen Center
- Thursday, August 29, 2024
- 6:00PM



LISA THOMPSON, RECREATION DIRECTOR · LISA.THOMPSON@BIDDEFORDMAINE.ORG · (207)283-0841

15

15

THE MISSION OF THE
BIDDEFORD RECREATION
DEPARTMENT IS

TO PROVIDE *quality programs and facilities*
THAT FOSTER HEALTHY
COMMUNITY CONNECTIONS
For All



Thank You!

Questions or feedback? Please contact:

LISA THOMPSON, RECREATION DIRECTOR · LISA.THOMPSON@BIDDEFORDMAINE.ORG · (207)283-0841

16